

STAHL'S

a GroupeSTAHL company

HEAT PRESSES

& ACCESSORIES



BUY FROM
MANUFACTURER
STAHL'S

Heat Presses 2

Clam Basic Series
 NEW: Clam Basic Cap 3

Sprint® MAG XS (15 cm x 15 cm)
 Sprint® MAG S (25 cm x 38 cm) 4
 Sprint® MAG L (40 cm x 40 cm)
 Sprint® MAG XL (40 cm x 50 cm)

Sprint® MAG Cap (9 cm x 16 cm) 5
 Sprint® MAG Hover (40 cm x 50 cm)

MAXX™ Clam Series 7

MAXX™ Cap

Hotronix® Fusion (40 cm x 50 cm) 8
 Hotronix® Air Swinger XL (40 cm x 50 cm)

Accessories 9-11

Heat Press Checklist 12

Further STAHL'S' products 13

Transfers & Services 14

Discover our complete range on www.stahls.de:

A wide range of digital printable CAD-COLOR® materials:
Solutions™ Opaque, SportsFilm, Premium Print, Prime New, Nylon, Sublistop, Silver, Glow in the Dark, Reflective, Reflective Elastic, Solvent Flock, Subliflock

A wide range of plottable CAD-CUT® materials:
SportsFilm, Premium Plus, Premium Plus Sublistop, Premium Plus Nylon, Flexi Film, Glitter, Effect, Flock

We have the right solution for your application:
If Cotton, Poly/Cotton blend, Polyester, Nylon or Lycra - we have the most suitable CAD-COLOR® and CAD-CUT® materials!



HOTRONIX® / Sprint®

STAHL'S Hotronix® / Sprint® / MAXX™ heat presses are the most accurate, innovative and technologically advanced heat press machines in the industry.

Hotronix® heat presses continue to dominate in design, outperform in comparison tests and outlast the competition in all areas. Companies all over the world take part in distributing heat seal equipment manufactured by Stahls' Hotronix® because it is reliable, accurate and easy to use.



Research - Testing - Manufacture

STAHL'S have their own worldwide manufacturing plants, maintaining the highest standards of quality at all times.

Testing is of paramount importance to ensure quality and consistency of product. STAHL'S testing procedures ensure customers have tried and tested products every time.

STAHL'S continually invests in the latest technology and production processes in all divisions to offer our customers the best products in the market, today and in the future. All our products are made from the highest quality materials and are easy to use.



Hotronix® Fusion™



Hotronix® automatic press / Sprint® Mag



Ideal machine for beginners!

Clam Basic

An ideal machine for beginners or as a back-up machine. The machine has a digital display to set temperature and time and is easy to handle.

**Available in 28cm x38cm & 38cm x 38cm
40cm x 50cm coming soon!**

Technical Specifications:
1000 Watt / 1750 Watt, 220/240 Volt

Shipping Dimensions:
82cm L x 50cm W x 52cm H

Shipping Weight:
24,5 kg / 30 kg



- Ideal for beginners or as a back-up machine
- Easy handling
- Digital display to set temperature & time
- Teflon® coated upper platen
- UL, ULC, CE and RoHS compliant
- 2 years warranty
- Made by STAHL'S in China

Ideal machine for beginners!

new Clam Basic Cap

An ideal machine for beginners or as a back-up machine. The machine has a digital display to set temperature and time and is easy to handle.

9x16 cm

Technical Specifications:
500 Watt, 220/240 Volt

Shipping Dimensions:
66cm L x 50cm W x 38cm H

Shipping Weight:
16 kg



- Ideal for beginners or as a back-up machine
- Interchangeable lower platen
- Easy handling
- Digital display to set temperature & time
- Teflon® coated upper platen
- UL, ULC, CE and RoHS compliant
- 2 years warranty
- Made by STAHL'S in China



You won't find a more user friendly press!

Sprint® Mag Digital

These heat presses features automatic release without the use of an air compressor and magnetic assisted lock down for maximum pressure with minimal effort. This heatpress also has fully digital time and temperature control and 999 seconds dwell time. The space saving clam shell design allows more room for multiple heat press machines which helps to create an environment for maximum potential and production. The Auto Open Series 15cm x 15cm heat press / Sprint® Mag XS is ideal for printing smaller transfers such as labels, tags, sleeve logos and more.

XS 15cm x 15cm

Specifications:
500 Watt, 4,5 Amp
Available in: 110 V or 220 V
Shipping Dimensions:
26cm L x 21cm B x 15cm H
Shipping Weight:
19 kg



28cm x 38cm

Specifications: 1750 Watt, 14,5 Amp
Available in: 110 V or 220 V
Shipping Dimension:
31cm L x 21cm B x 21cm H
Shipping Weight:
34 kg



40cm x 40cm

Specifications: 1750 Watt, 14,5 Amp
Available in: 110 V or 220 V
Shipping Dimension:
89cm L x 61cm B x 58cm H
Shipping Weight:
44 kg



40cm x 50cm

Specifications: 1750 Watt, 14,5 Amp
Available in: 110 V or 220 V
Shipping Dimension:
89cm L x 61cm B x 58cm H
Shipping Weight:
48 kg



- Patented, magnet assisted lockdown with automatic release
- Fully digital time and temperature control
- Live digital pressure display
- Twin Timer™ for two step applications with 999 sec dwell time
- 2cm thick Teflon® coated upper platen
- Quick change of lower platen
- Wide opening for easy layout
- 30 years heating element warranty
- Patented, Over-the-Centre pressure adjustment
- UL/ULC/CE/RoHS compliant



Wide opening for easy layout!

Sprint® Mag Cap

This cap press features automatic release without the use of an air compressor and patented, magnet assisted lock down for maximum pressure with minimal effort. The cap press also has fully digital time and temperature controls. The space saving clam shell design allows more room for multiple heat press machines which helps to create an environment for maximum potential and capacity.

9cm x 16cm

Specifications:

500 Watt, 4,5 Amp

Available in: 110 V or 220 V

Shipping Dimension:

66cm L x 50cm B x 38cm H

Shipping Weight:

19 kg



- Patented, magnet assisted lockdown with automatic release
- Fully digital time and temperature control
- Live digital pressure display
- Twin Timer™ for two step applications with 999 sec dwell time
- 2cm thick Teflon® coated upper platen
- Quick change of lower platen
- Wide opening for easy layout
- 30 years heating element warranty
- Patented, Over-the-Centre pressure adjustment
- UL/ULC/CE/RoHS compliant

Ideal for use with direct to garment printers!

Sprint® Mag Hover™

The new Hotronix® Hover Press™, a brand new patent pending heat press manufactured exclusively by Stahls' Hotronix®. The Hover Press™ includes digital time, temperature and pressure displays and allows the operator to set the press for two functions: hover or pressure. The Hotronix® Hover Press™ also features the new Twin Timer™ function which allows the user to program two independent time settings to count down any two-step process without resetting the timer.

40cm x 50cm

Specifications:

1750 Watt, 14,5 Amp

Available in: 110 V or 220 V

Shipping Dimension:

89cm L x 63cm B x 19cm H

Shipping Weight:

48 kg



- Patented, magnet assisted lockdown with automatic release
- Fully digital time and temperature control
- Live digital pressure display
- Twin Timer™ for two step applications with 999 sec dwell time
- 2cm thick Teflon® coated upper platen
- Quick change lower platen
- Wide opening for easy layout
- 30 years heating element warranty
- Space saving clam shell design
- Patented, Over-the-Centre pressure adjustment
- UL/ULC/CE/RoHS compliant



Best value for your money!

The **MAXX™** series

By STAHL'S

MAXX™ Clam

Engineered and patented by the heat press experts, this complete digital line has a wide opening for perfect application of a variety of today's heat applied graphics. Both economical and portable, this press is also equipped with the industry's best warranty.

Available in following sizes:

28cm x 38cm

Specifications:
1000 Watt

Available in:
110 V or 220 V

Shipping Dimensions:
31cm L x 21cm B x 21cm H

Shipping Weight:
34 kg



- Digital time & temperature readout
- Teflon® coated heat platen
- HRPO laser quality steel framework
- Smooth shock opening
- Scratch resistant, baked on powder coat finish
- Interchangeable lower platens
- UL/ULC/CE/RoHS compliant
- 30 years heating element warranty

38 cm x 38cm

Specifications:
1750 Watt, 14,5 Amp

Available in:
110 V or 220 V

Shipping Dimensions:
89cm L x 61cm B x 58cm H

Shipping Weight:
44 kg



40cm x 50cm

Specifications:
1750 Watt, 14,5 Amp

Available in:
110 V or 220 V

Shipping Dimensions:
89cm L x 61cm B x 58cm H

Shipping Weight:
48 kg



Best value for your money!

The **MAXX**™ series

By STAHL'S

MAXX™ Cap

Engineered and patented by the heat press experts, this complete digital line has a wide opening for perfect application of a variety of today's heat applied graphics. Both economical and portable, this press is also equipped with the industry's best warranty.

9cm x 16cm

Specifications:

500 Watt

Available in:

220 V or 240 V

Shipping Dimensions:

66 cm x 38 cm x 51 cm

Shipping Weight:

18 kg



- Digital time & temperature readout
- Teflon® coated heat platen
- HRPO laser quality steel framework
- Smooth shock opening
- Scratch resistant, baked on powder coat finish
- Interchangeable lower platens
- UL/ULC/CE/RoHS compliant
- 30 years heating element warranty



Great for high volume!

Hotronix® Fusion™

Breakthrough Heat Press Technology: the new Hotronix® Fusion™ from STAHL'S'. The world's first heat press designed with Touch Screen technology and dual function: get the benefits of both, a swinger and draw style - all in one press!

- Exclusive EZ-touch screen technology
- Live digital time, temperature and pressure readout
- Opens with Swing or Draw motion, fits the way YOU work
- Innovative EZ-On platen design
- Multiple time settings make applications a breeze
- 2cm thick platens for better heat retention
- Easy to install interchangeable platens
- Program & store frequently used applications
- Special cast aluminum frame
- UL/ULC/CE/RoHS compliant

FUSION™



40cm x 50cm

Available in:
1750 Watt, 110 V/220 V,
Shipping Dimensions:
89cm L x 61cm B x 56cm H
Shipping Weight:
60 kg

Innovative Design

Great for high volume!

Hotronix® Air Swinger

For high production users that demand accuracy, safety and ease handling. Excellent for high pressure applications and embossing. Print more garments with less operator effort.

40cm x 50cm

Specifications:
1750 Watt, 220/240 Volt
Shipping Dimension:
94cm L x 63cm W x 61cm H
Shipping Weight:
75 kg



- 100 PSI for high pressure applications
- Easy disconnection hose & air fitting
- Dual time settings
- Emergency release button
- User safe two-hand operation
- Stationary lower platen with interchangeable platen option
- 2cm thick Teflon® coated upper platen
- Instant tack mode
- LCD timer with auto reset
- UL, ULC, CE and RoHS approved
- 30 years heating element warranty



Interchangeable Platens

Sprint® Mag/MAXX™ Clam

- ø 18 cm (round)
- 15 cm x 25 cm
- 20 cm x 25 cm
- 40 cm x 40 cm
- 40 cm x 50 cm

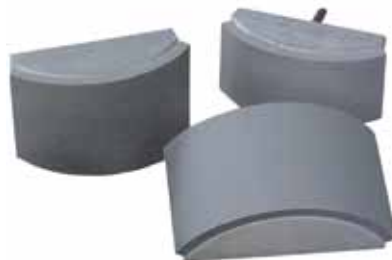


- Interchangeable platens allow you to heat apply graphics to a wide variety of garments and accessories.

Umbrella Platen: 40cm x 40cm, 40cm x 50cm

Sprint® Mag Cap/MAXX™ Cap/ Clam Basic Cap

- 6.0 cm x 8.0 cm
- 7.0 cm x 16.0 cm
- 7.5 cm x 14.5 cm
- 9.0 cm x 16.0 cm
- 10.0 cm x 16.0 cm
- 10.0 cm x 22.0 cm



- Allows greater versatility when working with a variety of cap styles.

Teflon® Quick Slip Pad Protector

Available in the following sizes:

- 28 cm x 38 cm
- 38 cm x 38 cm
- 40 cm x 40 cm
- 40 cm x 50 cm



- Fits snugly over the lower platen, making it easy to slide garments off and on while reducing wear and tear
- Easy to clean
- Sublimation colour does not adhere



Teflon® Pillow

Available in the following sizes:

- 41 cm x 51 cm
for oversized shirts
- 25 cm x 25 cm
for youth shirts
- 15 cm x 20 cm
for shorts and shoulders
- 13 cm x 46 cm
for sleeves and legs



- Prevent marks on transfers and lettering with these 2cm foam core Teflon® covered pillows. Use with V-necks, near heavy seams, zippers or buttons and as inserts for mesh and reversible jerseys.

Also available in a set (one of each size)

Cover Sheets

Cover sheets are used to keep graphics from sticking to the heat press platen, and to give graphics different textures and finishes.

Teflon® Cover Sheet:

46 cm x 49 cm



- Particularly tough, dirt can be easily removed
- Sublimation colour does not adhere
- Achieve a slightly shiny finish and slight texture

Grip Cover Sheet:

approx. 46 cm x 48 cm



- Wax coated, not to be used on sublimation-dyed polyester
- Achieve a matte finish in most cases
- Each side can be used multiple times

Grip Rubber Cover Sheet:

46 cm x 46 cm



- This high quality silicone pad retains heat very well and is a perfect aid when heat applying transfers
- Especially suited for heat applying CAD-CUT® materials
- Achieve a slightly textured surface



Thermo Tape / Dispenser



approx. 66m long

Thermo Tape:

- To affix transfers onto your textile
- Extreme heat resistant material
- Ideal for cups, garments, etc.

Dispenser:

- Durable construction
- Slip resistant, with rubber base to provide stability

Heat Platen Cleaner



- Keep your heat platen free from dirt
- Sold in packs of three

Heat Eraser



- Cleans the lower and upper platen
- Quickly disperses heat from hot transfers
- Ideal for cooling letters before you remove the cover sheet.

Stahls' EZ Weeder




- This handy tool lets you easily weed CAD-CUT® and CAD-COLOR® graphics.

Squeegee



- A squeegee is a straight-edged, rubber tool that is used to eliminate wrinkles and air bubbles when applying sign vinyl or masking digital media onto a thermoplastic carrier, to ensure an even application.

Heat Press Checklist

	Clam Basic 28cm x 38cm; 38cm x 38cm; 40cm x 50cm * digital pressure readout	MAXX™ Clam 28cm x 38 cm; 38cm x 38cm; 40cm x 50cm	MAXX™ Cap / Clam Basic Cap 3cm x 16 cm	Sprint® Mag Digital & XS 28cm x 38 cm; 40cm x 40cm; 40cm x 50cm; 15cm x 15 cm	Sprint® Mag Cap 9cm x 16cm	Hotronix® Hover 40cm x 50cm	Hotronix® Fusion™ 40cm x 50cm	Hotronix® Air Swinger 40cm x 50cm
---	--	---	--	---	--------------------------------------	---------------------------------------	---	---

Features								
Patented, magnetic auto open feature				X	X	X		
Patented, magnet assisted lock down				X	X	X		
Digital controls for temperature and time with auto release	X	X	X	X	X	X		X
Digital time, temperature and pressure controls	X*	X	X	X	X	X	X	X
Twin Timer™ for programming two independent time settings				X	X	X	X	X
Auto reset timer and LCD readout							X	X
Automatic timer	X	X	X	X	X	X	X	X
Platinum RTD heat sensor	X	X	X	X	X	X	X	X
10 preset programs							X	X
Push button controls / EZ touch screen (only Fusion™)	X	X		X		X	X	X
Patented, Over-the-Centre pressure adjustment	X	X		X		X	X	X
Under centre pressure adjustment			X		X			
Generates maximum pressure	X	X	X	X	X	X	X	X
Built-in pressure sensor				X	X	X	X	X
2cm thick Teflon® coated upper heat platen	X	X	X	X	X	X	X	X
Teflon® coated heater - stress relieved to prevent warping		X	X	X	X	X	X	X
30 years warranty for heat platen (heating element warranty)		X	X	X	X	X	X	X

All technical information and recommendations are based on tests we believe to be reliable. However, we cannot guarantee performance for conditions not under manufacturer's control. Before using, please determine the suitability of the product for its intended use. The user assumes all risks and the liability of anything relating to the use of this product. The Seller's and manufacturer's only obligation shall be to replace such those particular quantities of the product proven to be defective by manufacturer.

CAD-CUT®, CAD-LAB, Pressure Sensitive Polly-TWILL, & Hotronix are trademarks & ® trademarks of GroupeSTAHL™ with one or more patents or patents pending. © Stahls' Europe™ 2011 - All International Rights Reserved



CAD-COLOR® Materials

Under the term CAD-COLOR® we refer to our wide range of digitally printable and plottable materials. If Cotton, Poly/Cotton blend, Polyester, Nylon or Lycra, we have the most suitable CAD-COLOR® material.



- ✓ CAD-COLOR® Premium Print
- ✓ CAD-COLOR® SportsFilm
- ✓ CAD-COLOR® Solutions™ Opaque
- ✓ CAD-COLOR® Prime New
- ✓ CAD-COLOR® Nylon
- ✓ CAD-COLOR® Sublistop
- ✓ CAD-COLOR® Clear
- ✓ CAD-COLOR® Clear Mirror
- ✓ CAD-COLOR® Silver
- ✓ CAD-COLOR® Glow in the Dark
- ✓ CAD-COLOR® Solvent Flock
- ✓ CAD-COLOR® Subli Flock

CAD-CUT® Materials

Under the term CAD-CUT® we refer to our wide range of plottable materials. If Cotton, Poly/Cotton blend, Polyester, Nylon or Lycra, we have the most suitable CAD-CUT® material.



- ✓ CAD-CUT® Premium Plus
- ✓ CAD-CUT® Premium Plus Nylon
- ✓ CAD-CUT® Premium Plus Sublistop
- ✓ CAD-CUT® SportsFilm
- ✓ CAD-CUT® Flexi Film
- ✓ CAD-CUT® Flock
- ✓ CAD-CUT® Glitter
- ✓ CAD-CUT® Effect
- ✓ CAD-CUT® PS Poly Twill
- ✓ CAD-CUT® Felt

Curious?

Find more information under: www.stahls.eu



Screen Print Transfers

Did you know, that STAHL'S have their own printing production? We offer you suitable transfer solutions for any common textile.

Besides a large choice of standard colours, we also have the possibility to mix special colours. There are no limits for your creativity. We deliver within 3 to 6 working days from the date of the order confirmation. All our transfers are Öko-Tex certified.

Save yourself the hassle of weeding small motifs and place an order for STAHL'S screen print transfers!

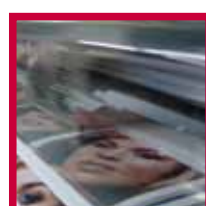


- ✓ Universaltransfer Plus - **PHTALATE FREE**
- ✓ Softtransfer
- ✓ Flock Transfer
- ✓ Colour-Flock Transfer

If digital printing, embroidery or other services, at STAHL'S you find all your heart desires!

- ✓ Coloured logos for any type of fabric - also for functional clothing such as Lycra or Spandex and many others
- ✓ Printing individual motifs or hundreds – in high quality with a great profit
- ✓ 100% opacity on dark textiles
- ✓ Full-colour reflective and metallic motifs
- ✓ Individual solutions for your problems
- ✓ Embroidery on jackets, bags and many more
- ✓ Heat apply service from 1 to 100.000 pcs
- ✓ Quick deliveries
- ✓ Also available are banners, stickers, posters etc.
- ✓ Problems with vectorising? Our design team is more than happy to help
- ✓ Plot service
- ✓ Digital Print Service
- ✓ And many more

If you have any questions or if you would like to receive an offer,



please send your specification to
grafik@stahls.eu



Europe

STAHL'S Europe GmbH • Dieselstraße 62 • D-66763 Dillingen
info@Stahls.de • www.Stahls.eu
Tel.: +49 (0)6831 97330 • Fax: +49 (0)6831 973345

STAHL'S'
a GroupeSTAHL company